



LISIANTHUS ASSORTMENT
2023 - 2024



Van Egmond Lisianthus
YOUNGPLANTS





Index

Description	Page
Index	3
Discontinued	3
New in our assortment	4-5
<i>Lisianthus grandiflorum</i> Arena F1 Series	6-9
<i>Lisianthus grandiflorum</i> Advantage F1 Series	10-11
<i>Lisianthus grandiflorum</i> Corelli F1 Series	12-15
<i>Lisianthus grandiflorum</i> Croma F1 Series	16-18
<i>Lisianthus grandiflorum</i> Cupid White F1	19
<i>Lisianthus grandiflorum</i> Jolly F1 Series	20
<i>Lisianthus grandiflorum</i> Falda F1 Series	21
<i>Lisianthus grandiflorum</i> Carmen F1 Series	22-23
<i>Lisianthus grandiflorum</i> Julietta F1 Series	24-25

Discontinued

- Lisianthus grandiflorum* Advantage F1 2 Yellow
- Lisianthus grandiflorum* Corelli F1 2 Delft Blue
- Lisianthus grandiflorum* Croma F1 3 Pink Picotee
- Lisianthus grandiflorum* Corelli F1 3 Yellow
- Lisianthus grandiflorum* Super Magic F1 1-2 Lilac

Introduction variety addition to Corelli F1 Series

page 13

Intro



2 Pink FRS900

*Introductions varieties Corelli *Sugoi F1*

page 14

Intro



SU 1 White FRS736

Intro



SU 2 White FRS737

Corelli
SUGOI!

* *Sugoi!* = Wow, amazing! extra fringed petals

Introduction Cupid White F1

page 19

Intro



Cupid 3 White FRS735



Arena F1 Series

Lisianthus grandiflorum

A wonderful palet of colours in Arena serie

3 Pink FRS702

*Light required -Germination
temperature 20-22°C*

*Days to germinate
20-25 days*

*Stem length
70-90 cm*

Introducing new colours every year, the Arena series now totals 23 varieties, giving more choices for growers, florists and consumers.

Selected for its high quality and fully double flowers on strong and sturdy stems.

Thick petals help transportability and large buds on the top increase the attractive character of the stems.

Arena III Pink may have less doubleness under high temperature conditions during flower bud formation stage.



1 Light Pink Imp.
FRS896



1 Pure White
FRS895



1 Purple
FRS897



1 White
FRS894



2 Kilimanjaro
FRS784



2 Purple Picotee
FRS873



2 White
FRS781



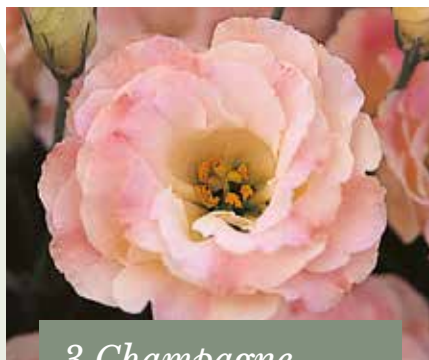
3 Apricot
FRS724



3 Baby Pink
FRS674



3 Blue Picotee
FRS723



3 Champagne
FRS708



3 Clear Pink
FRS729



3 Gold
FRS732



3 Green
FRS728



3 Mont Blanc
FRS861



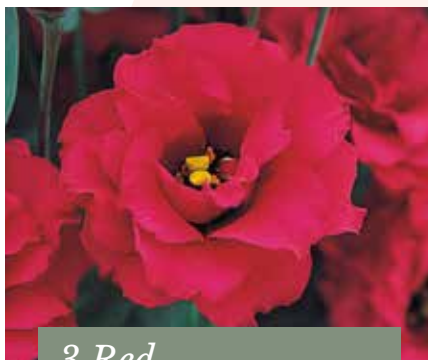
3 Pink
FRS702



3 Pink Flash
FRS725



3 Purple
FRS892



3 Red
FRS741



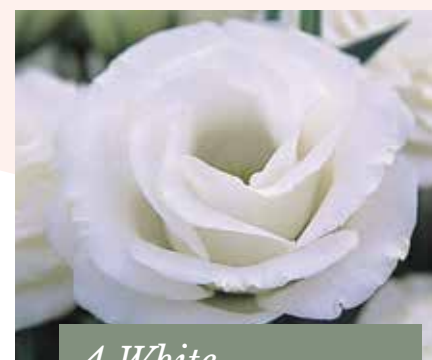
3 Rose
FRS733



3 White
FRS752



4 Rose
FRS705



4 White
FRS731

Variety Comparison among Arena

Variety Name			Flower Size		Branching	Plant Height	Stem Strength	Characteristics	
			cm	inch					
Double Flowered	Arena F1	1	Light Pink Imp.	8.0	3.2	Good	Short	Hard	More number of petals and early flowering than Arena I Light Pink
	Arena F1	1	Purple	8.5	3.4	Good	Medium	Hard	Easy to get long stem and good branching
	Arena F1	1	Pure White	8	3.2	Good	Short	Hard	High stable doubles. Very easy to grow.
	Arena F1	1	White	7.5	3	Good	Tall	Normal	Good flower shape and easy to get long stem.
	Arena F1	2	Kilimanjaro	8.0	3.2	Excellent	Medium	Very Hard	Abundant flower under strong sunlight
	Arena F1	2	Purple Picotee	8.0	3.2	Good	Short	Normal	Picotee edge is vivid and stable
	Arena F1	2	White	8.0	3.2	Good	Medium	Very Hard	Excellent flower shape, Strong stem
	Arena F1	3	Apricot	8.0	3.2	Good	Tall	Hard	Unique colour of flower
	Arena F1	3	Baby Pink	8.0	3.2	Good	Medium	Hard	Wavy, thick petals with good transportability
	Arena F1	3	Blue Picotee	7.5	3.0	Good	Tall	Very Hard	Thick petal and top flowering type
	Arena F1	3	Champagne	8.0	3.2	Good	Medium	Hard	Large flowers with many petals
	Arena F1	3	Clear Pink	8.0	3.2	Good	Tall	Hard	Flower buds shape is like peony.
	Arena F1	3	Gold	8.0	3.2	Good	Tall	Hard	High performance with its yellow gold flower
	Arena F1	3	Green	7.5	3.0	Excellent	Medium	Hard	Nice thick flower petal, good sturdy stem
	Arena F1	3	Mont Blanc	8.0	3.4	Good	Tall	Normal	Nice flowershape. Sufficient height in the warm conditions
	Arena F1	3	Pink	8.0	3.2	Good	Tall	Hard	Bright pink under fluorescent light
	Arena F1	3	Pink Flash	8.0	3.2	Good	Tall	Very Hard	Sturdy stem with high quality flower
	Arena F1	3	Purple	7.0	2.8	Good	Medium	Hard	Curly, thick petals with deep purple colour
	Arena F1	3	Red	6.0	2.4	Good	Tall	Hard	Vivid red, Unusual colour for Eustoma
	Arena F1	3	Rose	8.0	3.4	Good	Tall	Hard	Abundant flower with high doubleness under strong sunlight
Arena F1	3	White	10.0	4.0	Good	Tall	Hard	One of the biggest flower size variety within Arena series	
Arena F1	4	Rose	7.0	2.8	Good	Very Tall	Very Hard	Suitable for season when it gets difficult to secure enough stem length	
Arena F1	4	White	8.0	3.2	Good	Very Tall	Very Hard	Long stems suitable for cultivation under high temperatures and strong light intensity	

The above data is based on trials completed in Japan. Actual results depend on environmental conditions and local practices that may affect the variety's characteristics and performance.



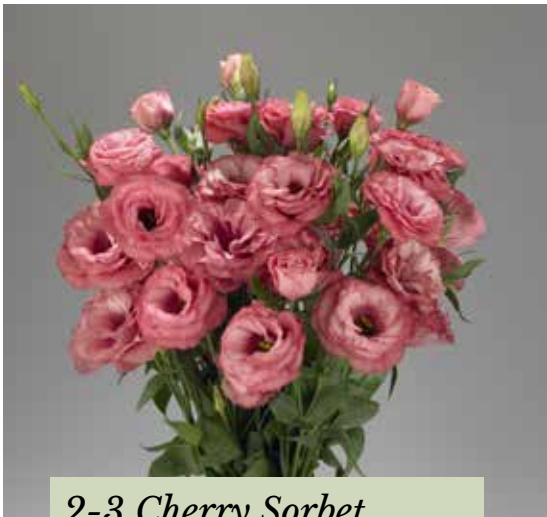
Advantage F1 Series

Lisianthus grandiflorum

Light required | Flower earliness 2-3 | Flower size Middle

<i>Germination temperature</i> 20-22°C	<i>Days to germinate</i> 20-25 days	<i>Stem length</i> 70-90 cm
---	--	--------------------------------

Fully double large flower.
Thick and strong stems more suitable for
production under high temperature and long
day conditions.



2-3 Cherry Sorbet
FRS113



2-3 Pink
FRS117



2-3 Purple
FRS115





Watch video



Corelli F1 Series

Lisianthus grandiflorum

Light required | Flower size Large

Germination temperature
20-22°C

Days to germinate
20-25 days

Stem length
70-90 cm



1 Deep Pink
FRS899

Corelli has excellent large, double flowers with elegant fringed, curly petals.

Along with large flower buds it has an elegant yet playful appearance and can create a classical ambience.

Top branching, excellent for bouquet usage and perfect vase life.



1 Pink
FRS882



1 White
FRS881



2 Lavender
FRS874



2 Light Pink
FRS872



2 Pink
FRS900



2 White
FRS871



3 Apricot
FRS766



3 Blue
FRS753



3 Lavender Imp.
FRS759



3 Light Pink
FRS764



3 Peach
FRS756



3 Rose
FRS762



Corelli
SUGOI!



CORELLI SU
1 Light Lavender
FRS898



CORELLI SU
1 Lavender Ice
FRS883



CORELLI SU
1 White
FRS736



CORELLI SU
2 White
FRS737



CORELLI SU
2 Light Pink
FRS758



CORELLI SU
3 Deep Pink - *FRS757*



CORELLI SU
3 Yellow - *FRS755*

“Sugoi!” = Amazing! Wow!
Premium Quality due to extra fringed
buds and high doubleness

Variety Comparison among Corelli

Variety Name			Flower Size		Branching	Plant Height	Stem Strength	Characteristic	
			cm	inch					
Double Flowered with fringed	Corelli F1	1	Deep Pink	8	3.2	Good	Short	Hard	Less stembreak. Flower earliness similar to Arena Light Pink Imp. F1
	Corelli F1	1	Pink	8.5	3.4	Normal	Medium	Normal	Green Center
	Corelli F1	1	White	8	3.2	Very Good	Short	Normal	Stable flower shape. Pure white colour, top flowering type
	Corelli F1	2	Delft Blue	8	3.2	Good	Medium	Normal	Unique marble colour with blue and white
	Corelli F1	2	Lavender	8.5	3.4	Good	Short	Hard	Strong stable fringed flower. Deeper Lavender under cooler condition
	Corelli F1	2	Light Pink	8.5	3.4	Good	Medium	Very Hard	Stable flower colour and thick petals
	Corelli F1	2	Pink (Intro)	8	3.2	Medium	Tall	Hard	Vigorous growing habit, good doubleness, excellent pink colour
	Corelli F1	2	White Improved	8.5	3.4	Good	Medium	Hard	Large flower with stable fringed flower petals
	Corelli F1	3	Apricot	8.5	3.4	Good	Medium	Hard	Highest number of petal and stable doubleness within Corelli series
	Corelli F1	3	Blue	8.5	3.4	Good	Short	Normal	Easy to get single flower under high temperature
	Corelli F1	3	Lavender Imp.	8.5	3.4	Good	Short	Hard	Excellent double flowers with elegant fringed curly petals
	Corelli F1	3	Light Pink	8.5	3.4	Good	Very Tall	Normal	Fringe is less compared to other colours in this series
	Corelli F1	3	Peach	9	3.5	Good	Tall	Hard	Stable flower shape, green center, easy to get long stem
	Corelli F1	3	Rose	8	3.2	Good	Tall	Very Hard	Thick petal with good transportability
Double Flowered extra fringed	Corelli F1	1	SU Light Lavender	8	3.2	Good	Short	Normal	Strongest fringed petals within Corelli series
	Corelli F1	1	SU Lavender Ice	8	3.2	Good	Short	Normal	Lighter Lavender
	Corelli F1	1	SU White (Intro)	8-9	3.2-3.5	Good	Medium	Hard	Earliest variety within Corelli Su White
	Corelli F1	2	SU White (Intro)	8-10	3.2-3.9	Good	Medium	Hard	Extra large flower size, strong fringed petals and pure white colour
	Corelli F1	2	SU Light Pink	8	3.2	Good	Medium	Hard	Thick petal with good transportability
	Corelli F1	3	SU Deep Pink	8	3.2	Good	Short	Normal	The strongest fringed petal within Corelli Series
	Corelli F1	3	SU Yellow	8	3.2	Normal	Normal	Normal	Strong fringed and great number of petals, good flowering uniformity

The above data is based on trials completed in Japan. Actual results are dependent upon environmental conditions and local practices that may affect variety characteristics and performance.



CROMA



Swirl dark coloured buds

Croma F1 Series

Lisianthus grandiflorum

Light required | Flower earliness 3 | Flower size Middle

Germination temperature
20-22°C

Days to germinate
20-25 days

Stem length
70-90 cm

Croma has excellent rose-like flowers.

Croma's thick, strong petals and extra-double flowers set it apart as a premium variety.

Due to the strength of the flowers and stems, it is well suited for cold chain shipping.

Croma is attractive to florists with its versatility in arrangements along with its high consumer appeal.



2 Champagne
FRS875



2 Purple
FRS876

Scan QR



3 Blue Picotee
FRS802



3 Blue Picotee Imp.
FRS744



3 Green Imp.
FRS805



3 Pink Picotee Imp.
FRS743



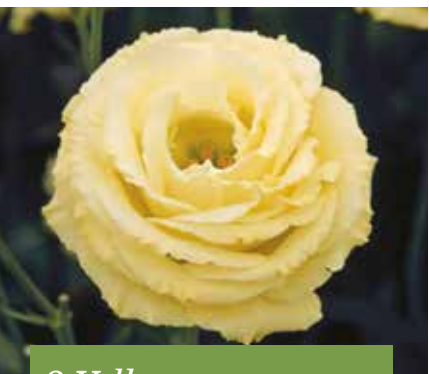
3 Red
FRS742



3 Silky White
FRS786



3 White
FRS785



3 Yellow
FRS801



4 Lavender Imp.
FRS745

Variety Comparison among Croma

Variety Name	Flower Size		Branching	Plant Height	Stem Strength	Characteristic		
	cm	inch						
Croma F1	2	Champagne	6	2.4	Good	Medium	Normal	Stable flower colour under cold condition.
Croma F1	2	Purple	6	2.4	Good	Medium	Normal	Rose flower shape, dark buds colour, thick petals
Croma F1	3	Blue Picotee	6	2.4	Excellent	Medium	Hard	Stable Picotee, high doubleness, top flowering
Croma F1	3	Blue Picotee Imp.	6	2.4	Good	Tall	Hard	Stable Picotee under high temperature condition.
Croma F1	3	Green	6	2.4	Good	Tall	Normal	Slow growth at early stage, but vigorous growth at later stage
Croma F1	3	Green Imp.	6	2.4	Excellent	Tall	Normal	Good branching habit and easy to get longer stem
Croma F1	3	Pink Picotee Imp.	7	2.8	Good	Medium	Very Hard	Stable picotee even under cold condition.
Croma F1	3	Red	6	2.4	Good	Medium	Hard	Stable colour, top flowering
Croma F1	3	Silky White	7	2.8	Good	Medium	Hard	Pure white. More open flower shape compared to Croma III White
Croma F1	3	White	7	2.8	Good	Medium	Hard	Rosy flower, Excellent performance, Nice shape flower with good doubleness
Croma F1	3	Yellow	6	2.4	Good	Tall	Hard	High doubleness
Croma F1	4	Lavender Imp	7	2.8	Excellent	Medium	Very Hard	Taller, larger flower than Croma IV Lavender

The above data is based on trials completed in Japan. Actual results are dependent upon environmental conditions and local practices that may affect variety characteristics and performance.





Cupid F1

Lisianthus grandiflorum

Light required | Flower earliness 3 | Flower size large

Germination temperature
20-22°C

Days to germinate
20-25 days

Stem length
70-90 cm

Intro



Cupid 3 White F1
FRS735

Cupid has excellent rose-shape flowers therefore has potential as a replacement for white roses.

Strong stem and flower neck, vigorous growing habit though less branching.

Very long vase life.



Jolly F1

Lisianthus grandiflorum

Light required | Petite flower size

Germination temperature
20-22°C

Days to germinate
20-25 days

Stem length
70-90 cm



3 Pink
FRS806

Jolly produces an abundance of petite flowers with long vase life.

Very vigorous plant habit with very strong stem and flower petals.



Falda F1 Series

Lisianthus grandiflorum

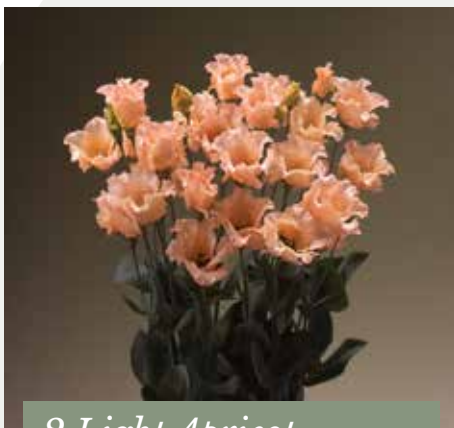
Light required - Flower earliness 2-3 - Flower size Middle

Germination temperature
20-22°C

Days to germinate
20-25 days

Stem length
70-90 cm

Thick fringed single flower petals and sturdy stems for good transportability.



2 Light Apricot
FRS673



3 White
FRS666



Carmen F1 Series

Lisianthus grandiflorum

Ideal for a colourfull carpet in your garden or use as pot plant

Germination temperature
20-22°C - *Light required*

Days to germinate
20-25 days

Plant height
12-25 cm

Excellent pot Lisianthus bred especially for its high quality root system.

Carme produces many medium sized long lasting flowers.



Blue
FRS151



Blue Rim
FRS153



Ivory
FRS155



Lilac
FRS152



Rose
FRS154




Julietta
lovely lisianthus



Watch video

Julietta F1 Series

Lisianthus grandiflorum

This attractive and romantic colour palette combines beautifully!

<i>Germination temperature</i> 20-22°C - <i>Light required</i>	<i>Days to germinate</i> 20-25 days	<i>Plant height</i> 12-25 cm
---	--	---------------------------------

The beauty and popularity of the double-flowered Lisianthus cut flowers now available as a lovely compact indoor pot plant range.

Julietta F1 is a compact plant, but its profusion of flowers makes it look like a bunch of flowers. With its extravagant blooming and impressive lifespan Julietta F1 is the perfect gift to enjoy for a long time!



Blue
FRS178



Pink
FRS177



White
FRS176





Van Egmond Lisianthus

YOUNGPLANTS

Van Egmond Lisianthus BV | Hoogeweg 12 | 2231 MS Rijnsburg | The Netherlands
e info@vanegmondlisianthus.com | t +31 (0)71 405 00 10 | www.vanegmondlisianthus.com

Bred by



Takii Europe B.V. | Hoofdweg 19, 1424 PC De Kwakel | The Netherlands
e flowers-eu@takii.eu - flowers-noneu@takii.eu | t +31 (0)29 734 57 00 | www.takii.eu

